

MONTHLY MEMBERSHIP PROGRESS REPORT

LOCATION CALIFORNIA

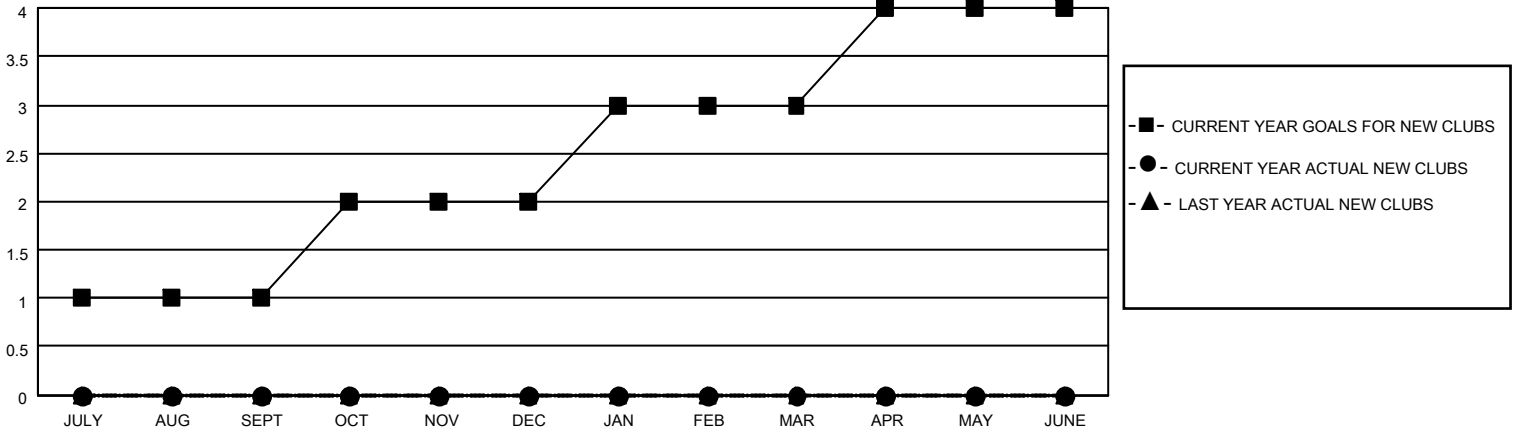
District 4 C1

Results as of: 8/31/2021

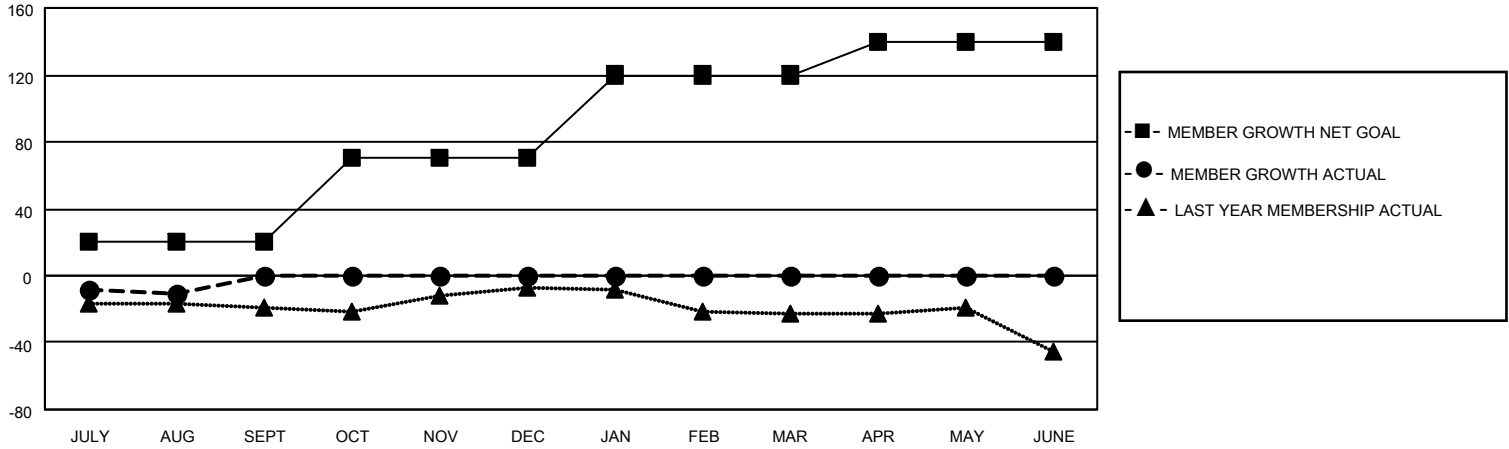
Clubs			
RESULTS FOR 2021-2022			
QUARTER	NEW CLUB GOAL	NEW CLUBS	DROPPED CLUBS
JULY/AUG/SEPT	1	0	1
OCT/NOV/DEC	1	0	0
JAN/FEB/MAR	1	0	0
APR/MAY/JUNE	1	0	0

Members			
RESULTS FOR 2021-2022			
QUARTER	MEMBER GROWTH NET GOAL	MEMBER GROWTH ACTUAL	DROPPED MEMBERS ACTUAL (including transfers)
JULY/AUG/SEPT	20	37	42
OCT/NOV/DEC	50	0	0
JAN/FEB/MAR	50	0	0
APR/MAY/JUNE	20	0	0

GOALS AND ACTUAL NEW CLUBS CUMULATIVE



GOALS AND ACTUAL MEMBERS CUMULATIVE



DROPPED CLUBS: 1

11 CLUBS OF 42 ADDED 1 OR MORE NEW MEMBERS

GENDER DISTRIBUTION

MALE	615 (65.08%)
FEMALE	330 (34.92%)
NON BINARY	0 (0.00%)
PREFER NOT TO ANSWER	0 (0.00%)

DROPPED MEMBERS

[CLICK HERE FOR CUMULATIVE MEMBERSHIP DATA](#)

DECEASED	2
CLUB CANCELLED	1
OTHER	39
TOTAL	42

TOTAL FAMILY UNIT MEMBERS 199

FAMILY MEMBERS PAYING HALF DUES 101